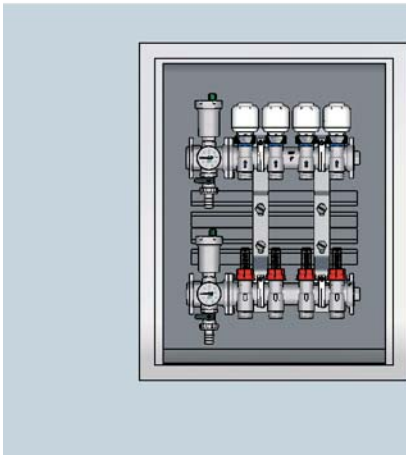


ZINC-COATED SHEET INSPECTION BOXES

1. Art. 7148

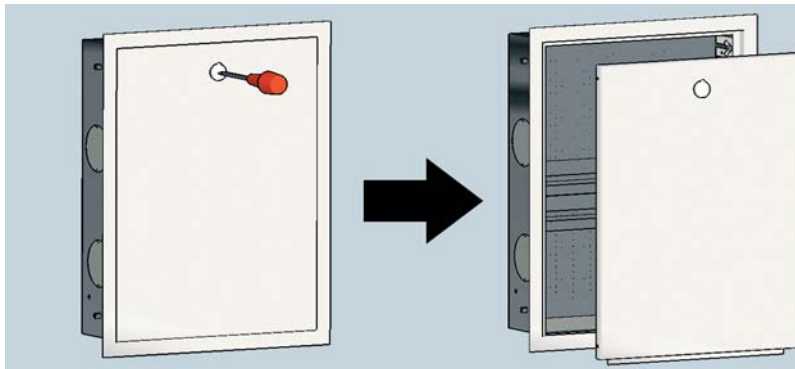
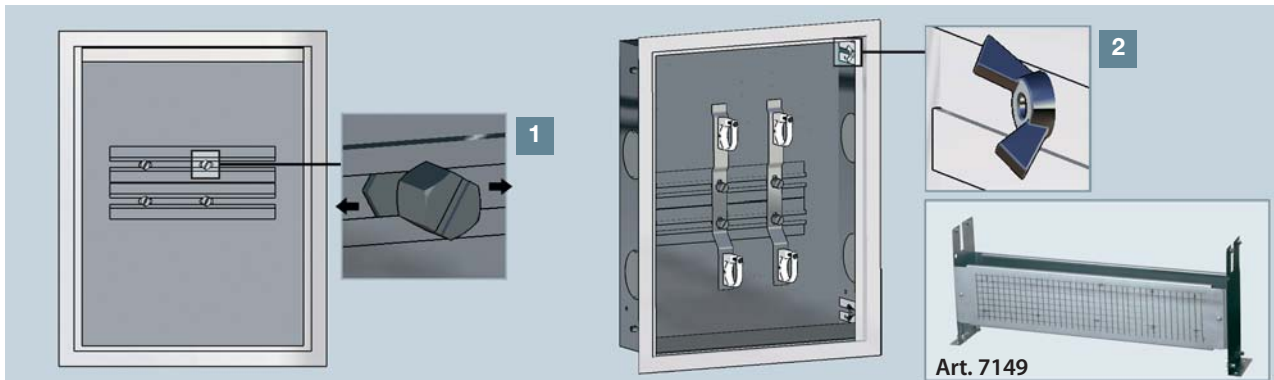


BOX WIDTH	COMPONENTS FOR INSTALLATION*
400 mm	4 Port Manifold +Connection+Plug+Valve
500 mm	6 Port Manifold +Connection+Plug+Valve
600 mm	7 Port Manifold +Connection+Plug+Valve
800 mm	10 Port Manifold +Connection+Plug+Valve
1000 mm	12 Port Manifold +Connection+Plug+Valve
1200 mm	15 Port Manifold +Connection+Plug+Valve

* Components for installation" refers to manifolds with a 50 mm centre line between ports, intermediate connection with automatic air vent valve, drain cock, temperature gauge, terminal plug and finally a zone valve or ball valve.

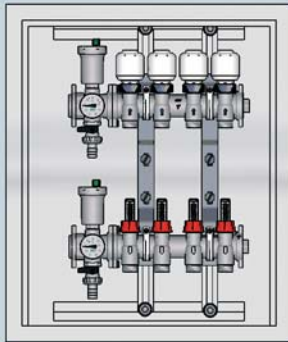
Boxes are available in differing dimensions: 40 cm, 50 cm, 60cm, 80 cm, 100 cm and 120 cm; and with depth adjustable from 11 cm up to 15 cm, depending on wall thickness. Manifolds can be installed into the box using the horizontal slides, which are provided with the screws and nuts necessary to fix the brackets. (Illustration 1)

Brackets assembly can be achieved using the screws and the nuts provided in the packaging. Wing screws located on the inner sides of the box permit depth adjustment. (Illustration 2) For floor installation the box can be adjusted with the aid of the support Art. 7149. The box is made of zinc-coated sheet, but both cover and frame are painted in white RAL 9010.



The box cover is easily removable: using a simple flat screwdriver turn the screw clockwise through 90° and lever in order to pull it out.

2. Art. 7150

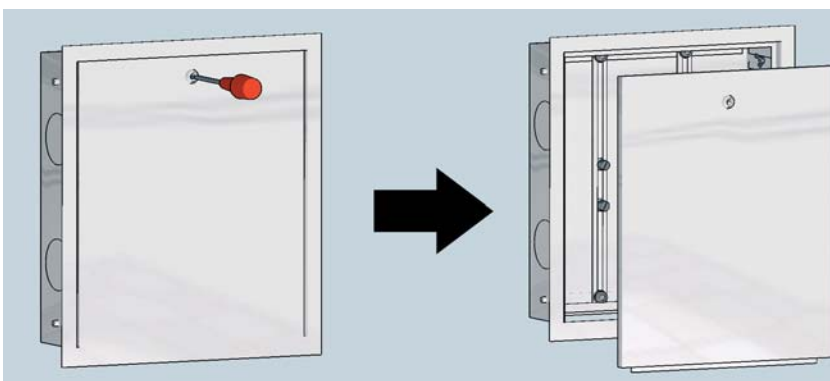
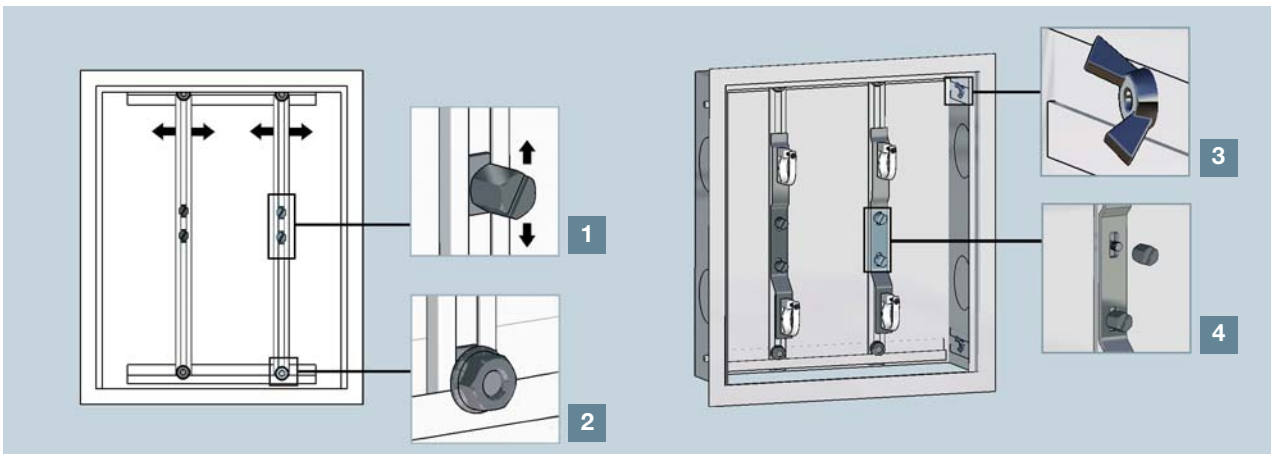


BOX WIDTH	COMPONENTS FOR INSTALLATION*
400 mm	4 Port Manifold +Connection+Plug+Valve
600 mm	7 Port Manifold +Connection+Plug+Valve
800 mm	10 Port Manifold +Connection+Plug+Valve
1000 mm	12 Port Manifold +Connection+Plug+Valve
1200 mm	15 Port Manifold +Connection+Plug+Valve

* Components for installation" refers to manifolds with a 50 mm centre line between ports, intermediate connection with automatic air vent valve, drain cock, temperature gauge, terminal plug and finally a zone valve or ball valve.

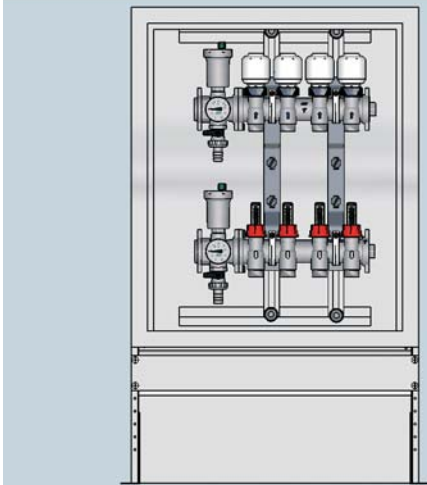
Boxes are available in differing dimensions: 40 cm, 60cm, 80 cm, 100 cm and 120 cm; and with depth adjustable from 11 cm up to 15 cm, depending on wall thickness. Manifolds can be installed into the box using the horizontal slides, which can be set to the position desired. (Illustration 2) Slides are provided with sliding fixing screws (Illustration 1), which permit assembly of the brackets, even if the manifolds have already been

installed, thus ensuring maximum flexibility of installation. The nuts must be then tightened in order to fix the brackets (Illustration 4). Slides and brackets assembly can be achieved using the screws and the nuts provided in the packaging. Wing screws located on the inner sides of the box permit depth adjustment. (Illustration 3). The box is made of white RAL 9010 painted sheet steel.



The box cover can be easily removed: using a simple flat screwdriver turn the screw clockwise through 90° and lever in order to pull it out.

3. Art. 7155

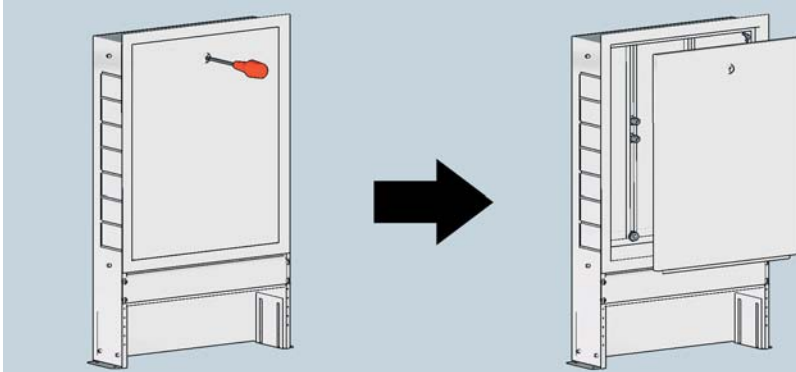
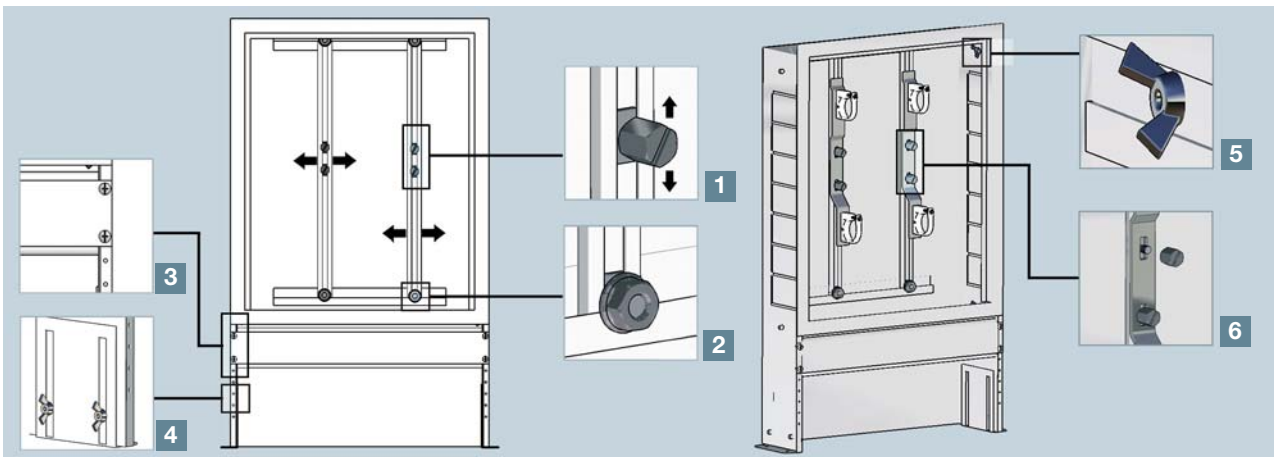


BOX WIDTH	COMPONENTS FOR INSTALLATION*
400 mm	4 Port Manifold +Connection+Plug+Valve
600 mm	7 Port Manifold +Connection+Plug+Valve
800 mm	10 Port Manifold +Connection+Plug+Valve
1000 mm	12 Port Manifold +Connection+Plug+Valve
1200 mm	15 Port Manifold +Connection+Plug+Valve

* Components for installation" refers to manifolds with a 50 mm centre line between ports, intermediate connection with automatic air vent valve, drain cock, temperature gauge, terminal plug and finally a zone valve or ball valve.

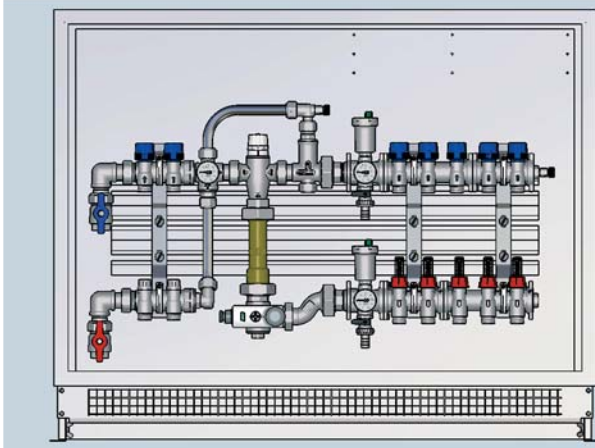
Boxes are available in differing dimensions: 40 cm, 60cm, 80 cm, 100 cm and 120 cm; and with depth adjustable from 12 cm up to 17 cm, depending on wall thickness. Manifolds can be installed into the box using the horizontal slides, which can be set to the position desired. (Illustration 2). Slides are provided with sliding fixing screws (Illustration 1) which permit assembly of the brackets, even if the manifolds have already been installed, thus ensuring maximum flexibility of installation. The nuts must then be tightened in order to fix the brackets (Illustration 6). Slides and brackets assembly can be achieved

using the screws and the nuts provided in the packaging. The panel is adjustable depending on distance from the floor and can be fixed to the box using the 4 special screws. (Illustration 3). The panel is also provided with an angled component to facilitate pipe insertion. Moreover, when required, it is possible to extend the box feet up to 9 cm. (Illustration 4). Wing screws located on the inner sides of the box permit depth adjustment. (Illustration 5). The box is made of white RAL 9010 painted sheet steel.



The box cover is easily removable: using a simple flat screwdriver turn the screw clockwise through 90° and lever in order to pull it out.

4. Art. 7165



COMPONENTS FOR INSTALLATION (REGULATING UNIT + MANIFOLDS)

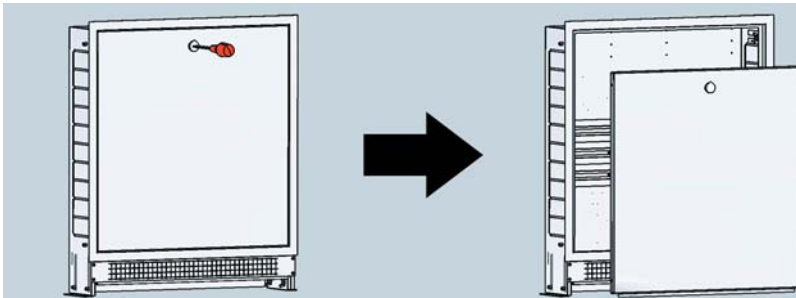
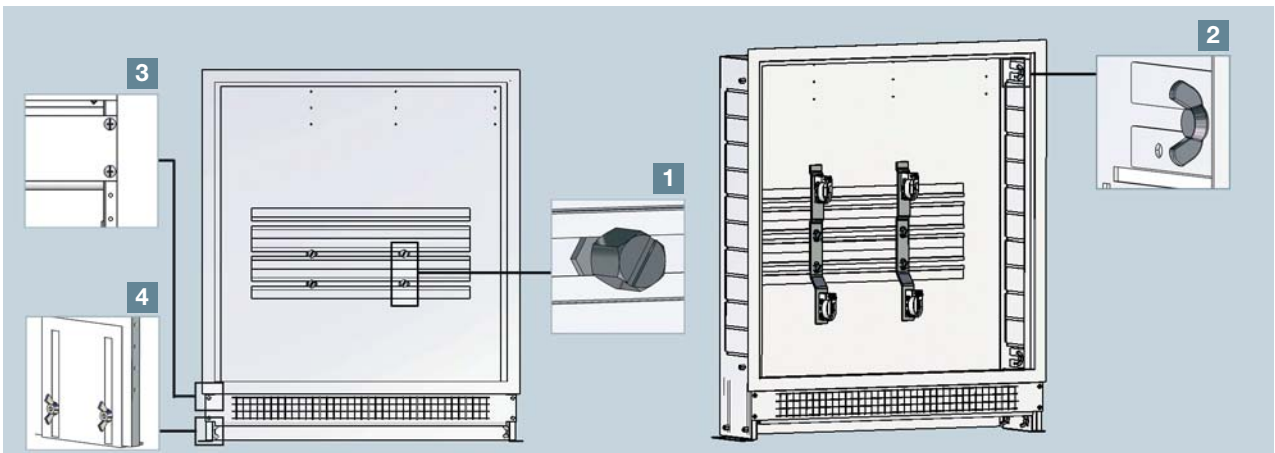
BOX WIDTH	LOW TEMPERATURE UNIT		HIGH AND LOW TEMPERATURE UNIT	
	OUTLETS-LOW TEMPERATURE	OUTLETS-HIGH TEMPERATURE	OUTLETS-HIGH TEMPERATURE	OUTLETS-LOW TEMPERATURE
700 mm	4	-	-	-
800 mm	6	3	3	3
900 mm	8	3	3	5
1000 mm	10	3	3	7
1100 mm	12	3	3	9
1200 mm	14	3	3	10

Boxes are available in differing dimensions: 70 cm, 80cm, 90 cm, 100 cm, 110 cm and 120 cm; and with depth adjustable from 15 cm up to 19 cm, depending on wall thickness. Brackets assembly can be achieved using the screws and the nuts provided in the packaging. This kind of box is ideal for the installation of a pre-assembled regulating unit for underfloor heating systems, as shown in the table above. It is wider in comparison with the other kinds of boxes, due to the requirement for the installation of a pump for the regulating unit. Manifolds can be installed into the box using the horizontal slides,

which are provided with the screws and nuts needed to fix the brackets. (Illustration 1).

Wing screws located on the inner sides of the box permit depth adjustment. (Illustration 2).

The panel is adjustable depending on the distance from the floor and can be fixed to the box using the 4 special screws. (Illustration 3). The panel is also provided with an angled component to facilitate pipe insertion. Moreover, when necessary, it is possible to extend the box feet up to 9 cm. (Illustration 4). The box is made of white RAL 9010 painted sheet steel.



The box cover is easily removable: using a simple flat screwdriver turn the screw clockwise through 90° and lever in order to pull it out.

5. ACCESSORIES



Art. 7152

Painted sheet steel frame for distribution manifolds.
 - dimensions for the box Art.7150
 - cover with lock



Art. 7156

Painted sheet steel frame for distribution manifolds.
 - dimensions for the box Art.7155
 - cover with lock



Art. 7166

Painted sheet steel frame for distribution manifolds.
 - dimensions for the box Art.7165
 - cover with lock



Art. 7149

Support for floor installation of zinc-coated sheet box with painted cover (Art.7148).



Art. 7153

Slide for bracket locking onto sheet inspection box (Art.7150 - 7155).



Art. 7485

Metal bracket for inspection box (Art.7148-7150-7155-7165)



Art. 7490

Supports for manifolds preset to be hooked onto metal bracket (Art.7485).



Art. 7480

Metal bracket complete with supports for inspection box (Art. 7148-7150-7155-7165).



Art. 8558

M10 nut complete with screw for slide locking onto inspection box (Art. 7150-7155)



Art. 8557

M10 nut complete with screw for brackets locking onto inspection box (Art. 7148-7150-7155-7165).



Art. 8556

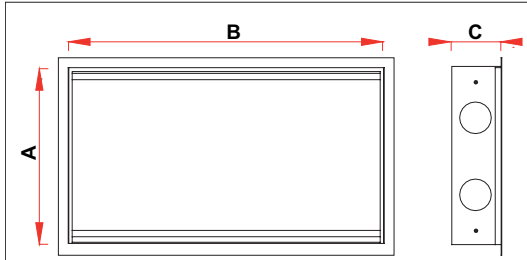
Wing nut for frame locking onto sheet inspection box (Art.7148-7150-7155-7165).



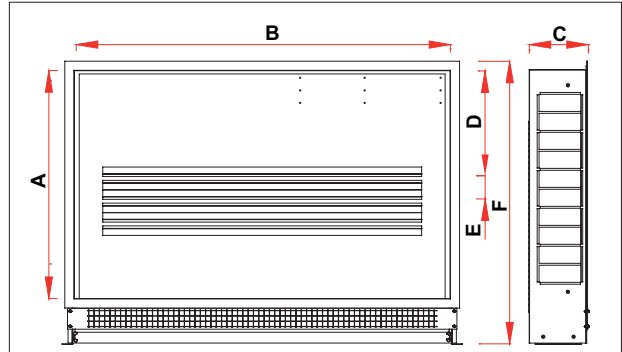
Art. 7470

Metal bracket complete with collars for 'START' multipurpose manifolds and manifolds with a 100 mm centre line between ports.

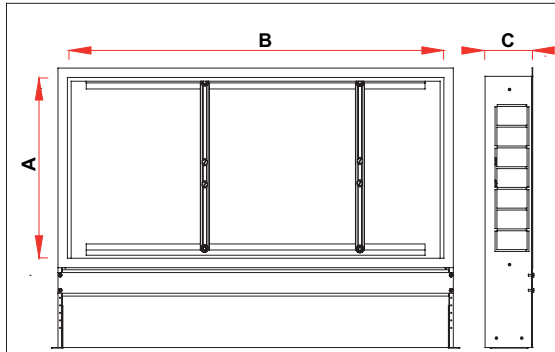
6. DIMENSIONAL FEATURES



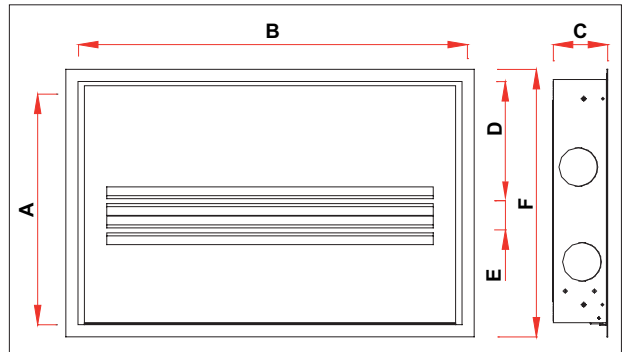
CODE	A	B	C
7150 40	450	400	110 - 150
7150 50	450	500	110 - 150
7150 60	450	600	110 - 150
7150 80	450	800	110 - 150
7150 100	450	1000	110 - 150
7150 120	450	1200	110 - 150



CODE	A	B	C	D	E	F
7165 70	600	700	150-190	284	60	746 - 830
7165 80	600	800	150-190	284	60	746 - 830
7165 90	600	900	150-190	284	60	746 - 830
7165 100	600	1000	150-190	284	60	746 - 830
7165 110	600	1100	150-190	284	60	746 - 830
7165 120	600	1200	150-190	284	60	746 - 830



CODE	A	B	C
7155 40	480	400	120-170
7155 60	480	600	120-170
7155 80	480	800	120-170
7155 100	480	1000	120-170
7155 120	480	1200	120-170



CODE	A	B	C	D	E	F
7148 40	500	400	110	194	60	550
7148 50	500	500	110	194	60	550
7148 60	500	600	110	194	60	550
7148 80	500	800	110	194	60	550
7148 100	500	1000	110	194	60	550
7148 120	500	1200	110	194	60	550